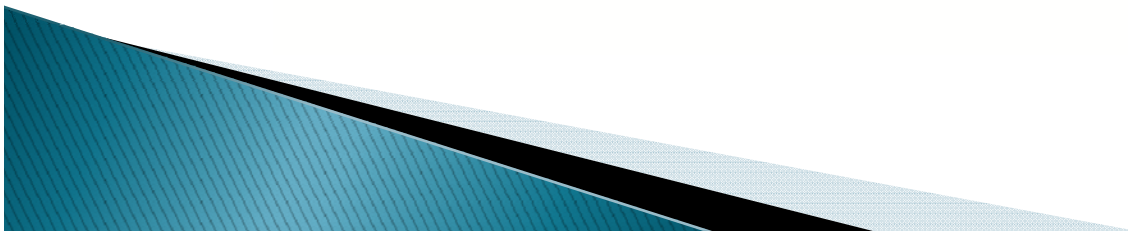




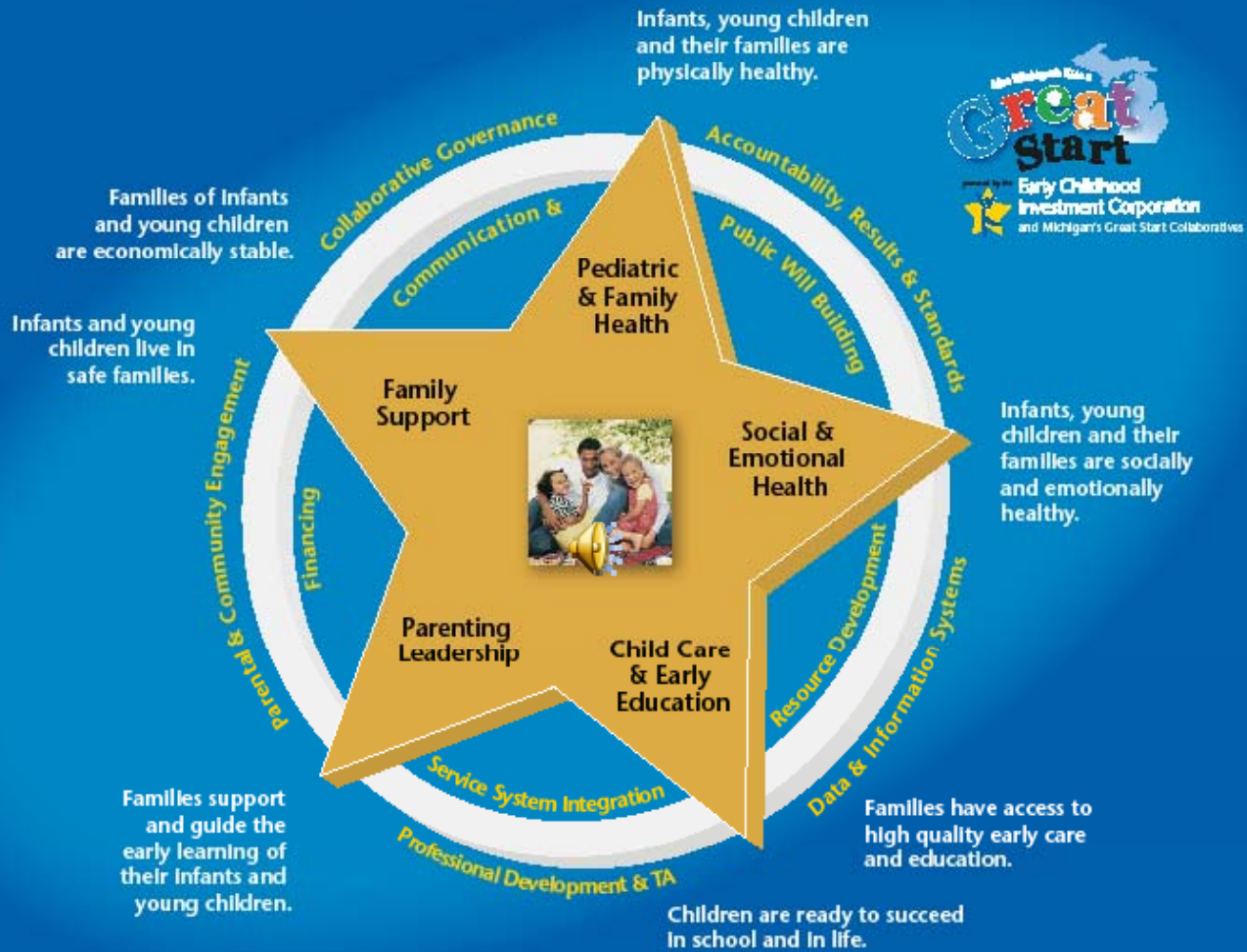
Calhoun County

A partner of the
Early Childhood Investment Corporation



Michigan's Great Start Initiative

Vision: A Great Start to make every child in Michigan safe, healthy, and eager to succeed in school and in life.

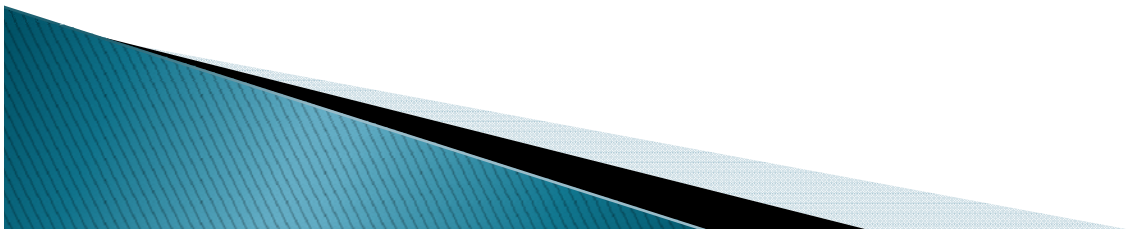


Michigan's Great Start Initiative



Pediatric & Family Health

- Infants, young children and their families are physically healthy.

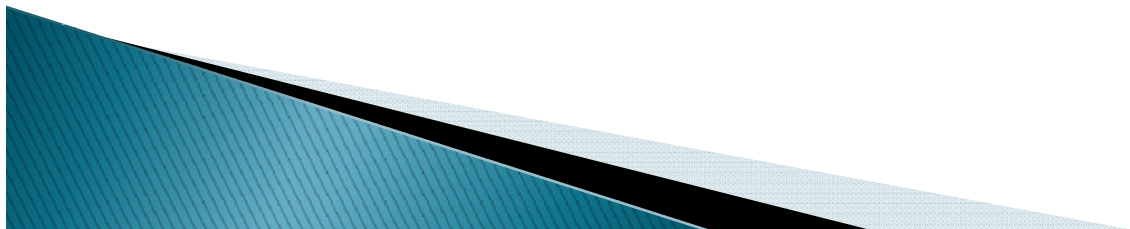


Michigan's Great Start Initiative



Social & Emotional Health

- Infants, young children and their families are socially and emotionally healthy.

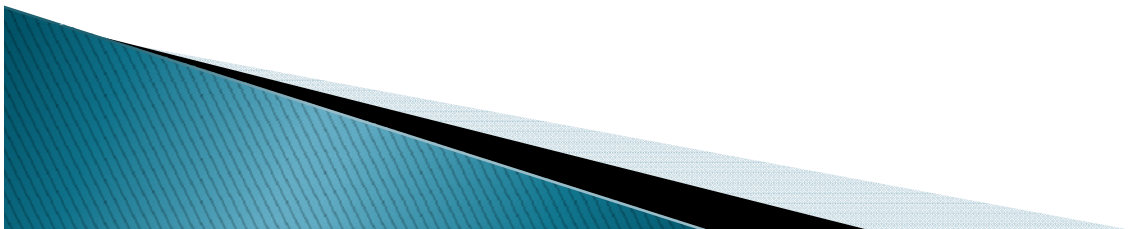


Michigan's Great Start Initiative



Child Care & Early Education

- Families have access to high quality early care and education.
- Children are ready to succeed in school and in life.

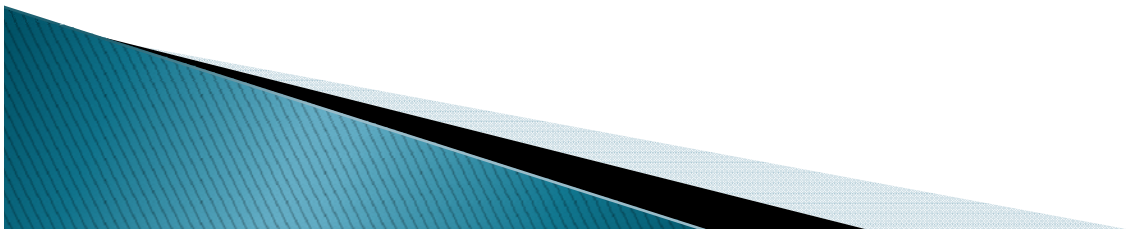


Michigan's Great Start Initiative



Parenting Leadership

- Families support and guide the early learning of their infants and young children.

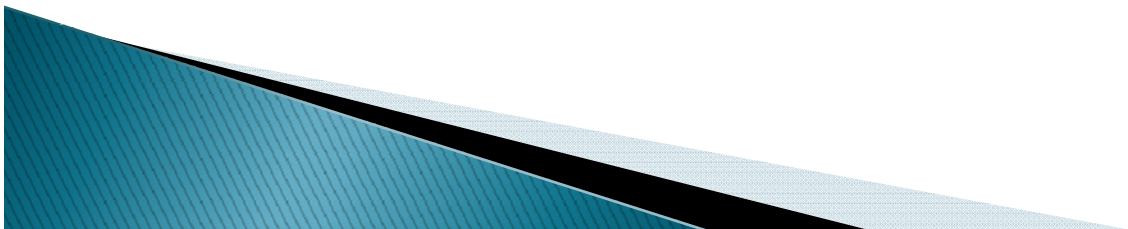


Michigan's Great Start Initiative



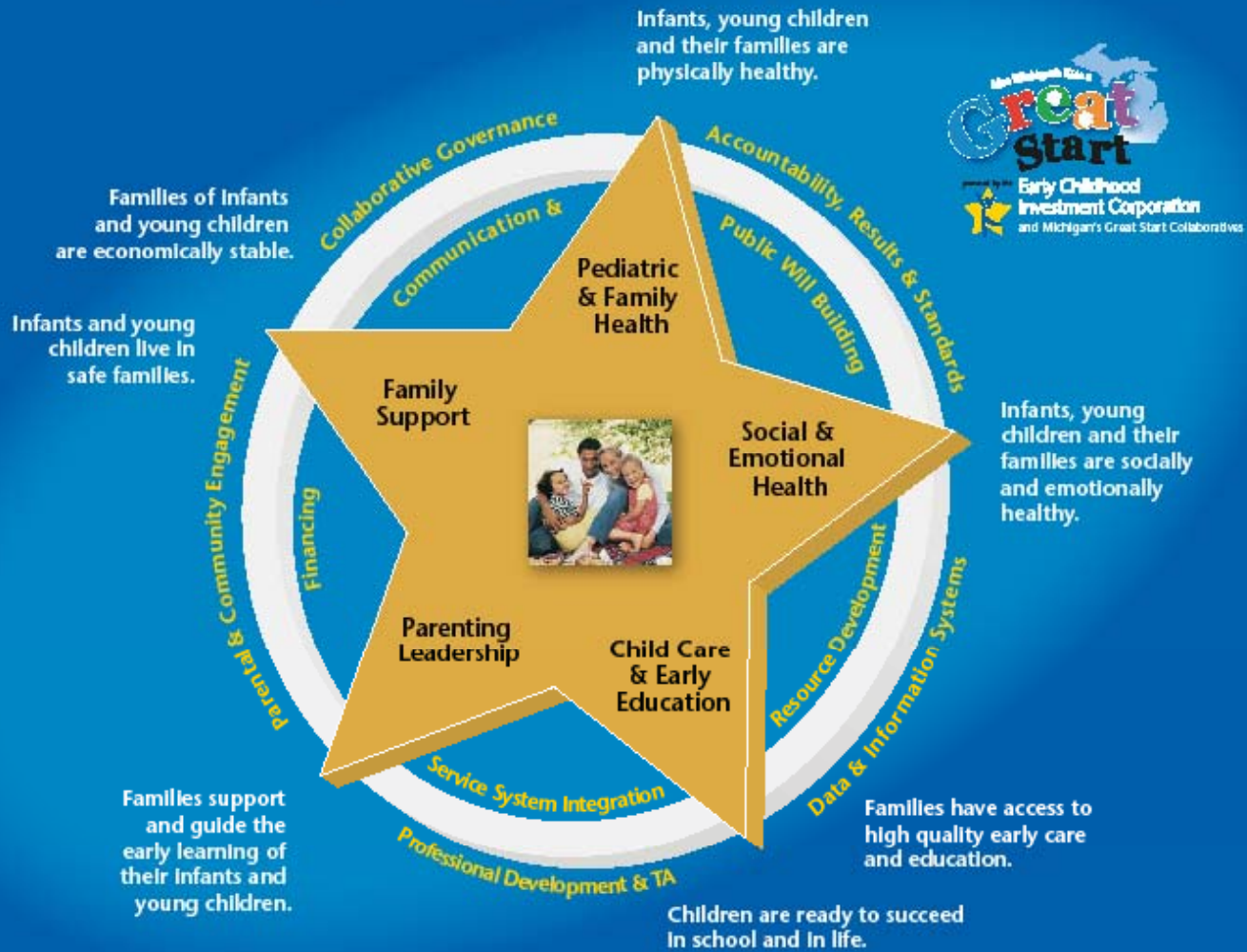
Family Support

- Families of infants and young children are economically stable.
- Infants and young children live in safe families.



Michigan's Great Start Initiative

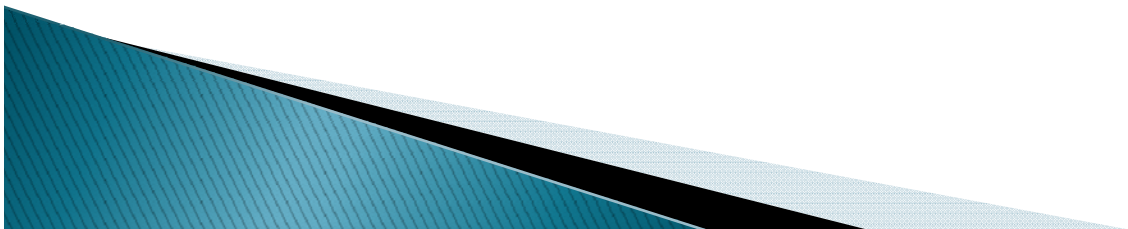
Vision: A Great Start to make every child in Michigan safe, healthy, and eager to succeed in school and in life.



Vision for Calhoun County's Youngest Citizens:



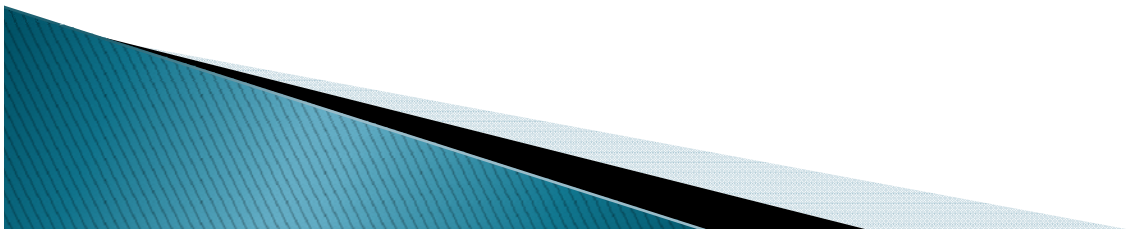
Every child in Calhoun County will have a *great start*. They will be safe, healthy, prepared, and eager to succeed in school and life, becoming contributing and productive members of their community.



Mission for Calhoun County's Youngest Citizens:



To ensure Calhoun County will have a coordinated system of community resources and supports for all families in order to provide a *great start* for children from birth through age eight.



READINESS EQUATION:

A Formula that Works for Our Young Children

Ready Families + Ready Health Services + Ready Early Care/Education + Ready Schools + Ready Communities = READY CHILDREN

To help make this formula work for **OUR** young children, **READY TEAMS** have been created to focus on each of the five pieces of the equation.



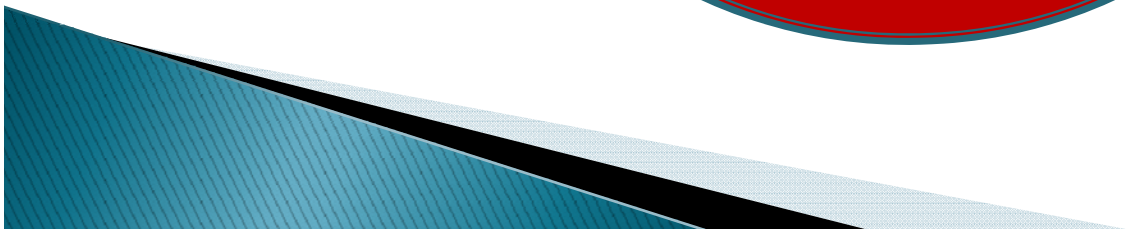
Vision for Calhoun County's Youngest Citizens:

Every child in Calhoun County will have a great start. They will be safe, healthy, prepared, and eager to succeed in school and life, becoming contributing and productive members of their community.

SUPPORTING CALHOON COUNTY'S YOUNGEST CITIZENS

The Calhoun County School Readiness Equation:

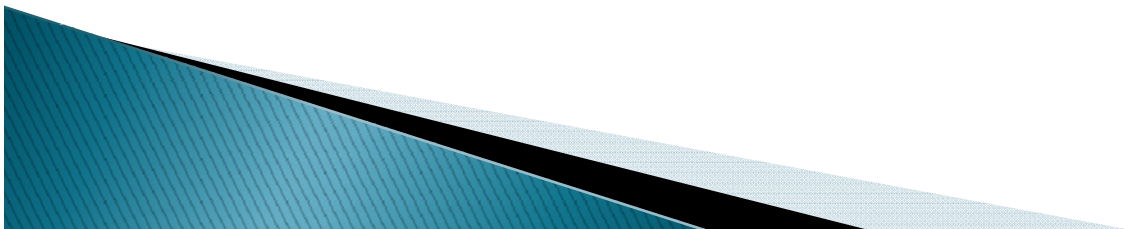
READY FAMILIES



READY FAMILIES



- Ready families are healthy, educated, safe and stable. They have the resources, capabilities and support systems to nurture healthy relationships.
- Ready Families create supportive environments where adults embrace their role as the child's first and most important teacher who is responsible for the child's school readiness.



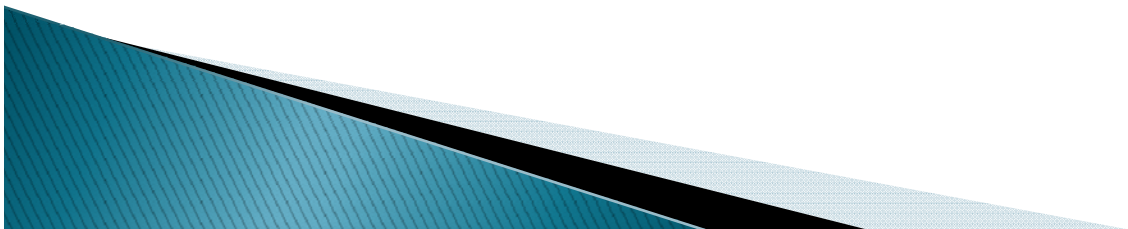
The Calhoun County School Readiness Equation:



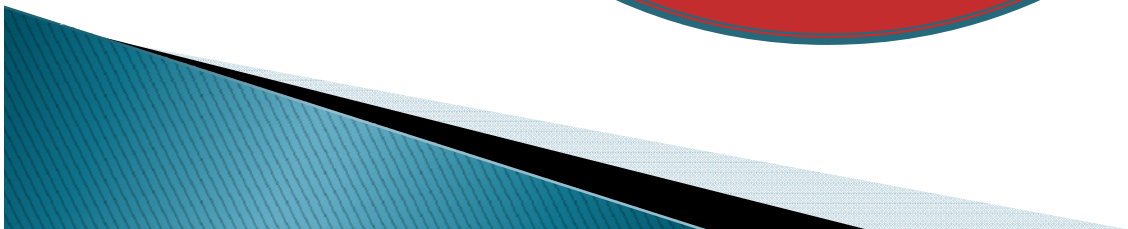


READY HEALTH SERVICES

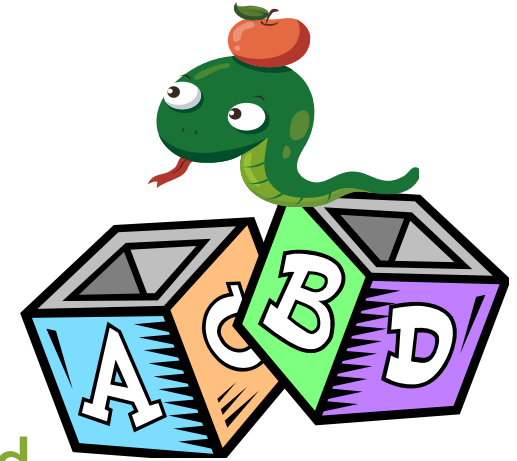
- Ready health services exist when children and families have access to quality health services that begins before a child is born and continues through adulthood.
- Communities with access to health coverage, prenatal care, preventative healthcare, mental health and supports for at-risk children and those with developmental delays are more likely to have children entering school healthy and ready to learn.



The Calhoun County School Readiness Equation:



READY EARLY CARE & EDUCATION



- An effective Ready Early Care and Education system is based on the needs of the community.
- The services and the system are accessible, well-managed and quality-based with diverse sources of funding and support.
- Ready Early Care and Education is intentional in its engagement of all cultural, racial and socio-economic aspects of the community.



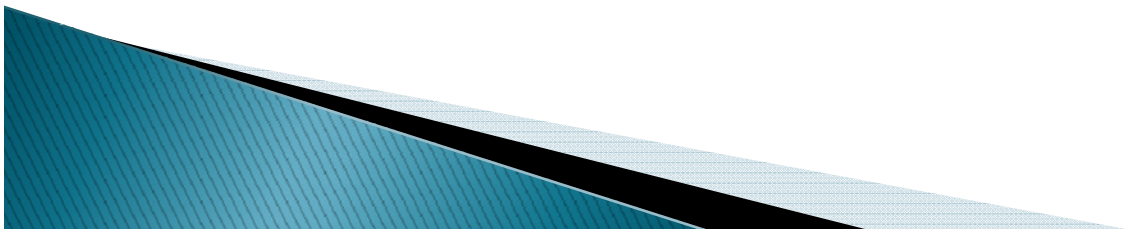
The Calhoun County School Readiness Equation:



READY SCHOOLS



- In a Ready School ALL children succeed
- A Ready School:
 - * Maintains a consistent focus on learning
 - * Is safe and orderly
 - * Has clear expectations and goals
 - * Is welcoming and sensitive to the needs of children and their families
- The Ready School staff:
 - * Are led by strong and effective administrators
 - * Use data and results to drive learning, instruction and decision-making
 - * Use proven teaching methods at all times



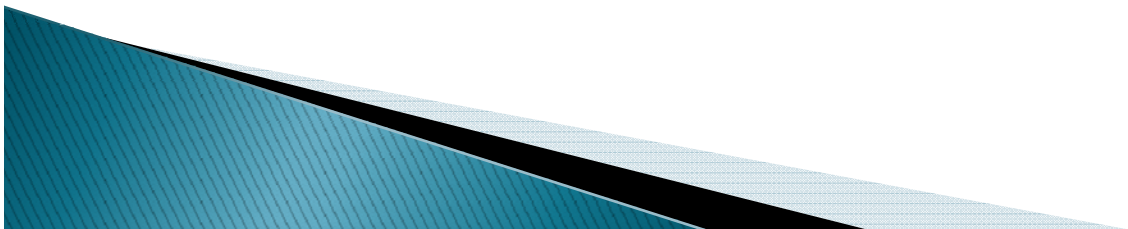
The Calhoun County School Readiness Equation:



READY COMMUNITIES



- A Ready Community is a community that is strong and vibrant, celebrating all aspects of diversity in both people and leadership.
- In a Ready Community, children are a priority and the needs of the whole child are recognized and supported. Families feel safe, connected, supported, nurtured and empowered.



The Calhoun County School Readiness Equation:

READY FAMILIES + READY HEALTH SERVICES +

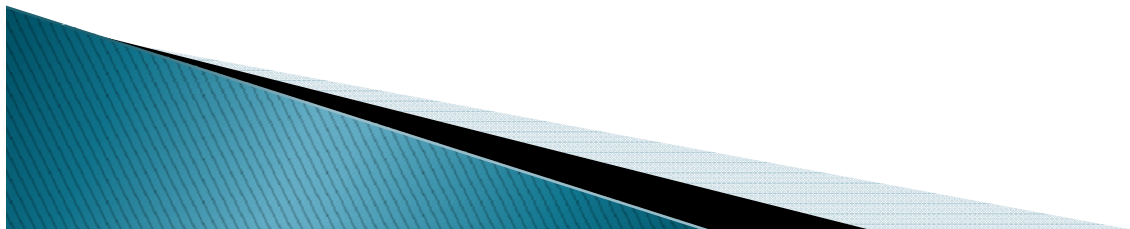
**READY EARLY CARE
& EDUCATION +**

READY SCHOOLS +

READY COMMUNITIES

=

**READY
CHILDREN**



READINESS EQUATION:

A Formula that Works for Our Young Children

**Ready Families + Ready Health Services + Ready Early Care/Education +
Ready Schools + Ready Communities = READY CHILDREN**

To help make this formula work for **OUR** young children,
READY TEAMS have been created to focus on each of the five pieces of the equation.



Vision for Calhoun County's Youngest Citizens:

Every child in Calhoun County will have a great start. They will be safe, healthy, prepared, and eager to succeed in school and life, becoming contributing and productive members of their community.

SUPPORTING CALHOON COUNTY'S YOUNGEST CITIZENS

Ready Families + Ready Health Services + Ready Early Care/Education + Ready Schools + Ready Communities = Ready Children

Ready Families

- Ready families are healthy, educated, safe and stable. They have the resources, capabilities and support systems to nurture healthy relationships.
- Ready Families create supportive environments where adults embrace their role as the child's first and most important teacher who is responsible for the child's school readiness.

Ready Health Services

- Ready health services exist when children and families have access to quality health services that begins before a child is born and continues through adulthood.
- Communities with access to health coverage, prenatal care, preventative healthcare, mental health and supports for at-risk children and those with developmental delays are more likely to have children entering school healthy and ready to learn.

Ready Early Care & Education

- An effective Ready Early Care and Education system is based on the needs of the community.
- The services and the system are accessible, well-managed and quality-based with diverse sources of funding and support.
- Ready Early Care and Education is intentional in its engagement of all cultural, racial and socio-economic aspects of the community.


Ready Schools

- In a Ready School **ALL** children succeed
- A Ready School: Maintains a consistent focus on learning; Is safe and orderly; Has clear expectations and goals; Is welcoming and sensitive to the needs of children and their families.
- The Ready School staff: Are led by strong and effective administrators; Use data and results to drive learning, instruction and decision-making; Use proven teaching methods at all times

Ready Communities

- A Ready Community is a community that is strong and vibrant, celebrating all aspects of diversity in both people and leadership.
- In a Ready Community, children are a priority and the needs of the whole child are recognized and supported. Families feel safe, connected, supported, nurtured and empowered



The image features several 3D-style gears of various colors (yellow, green, tan, brown, red, blue, light green) arranged around the central text. A blue and black diagonal graphic element is located in the bottom-left corner.

Calhoun County Early Childhood Operating System

Calhoun County Early Childhood Operating System

Ready Families + Ready Health Services + Ready Early Care & Education +
Ready Schools + Ready Communities = **READY CHILDREN**



Vision for Calhoun County's Youngest Citizens:

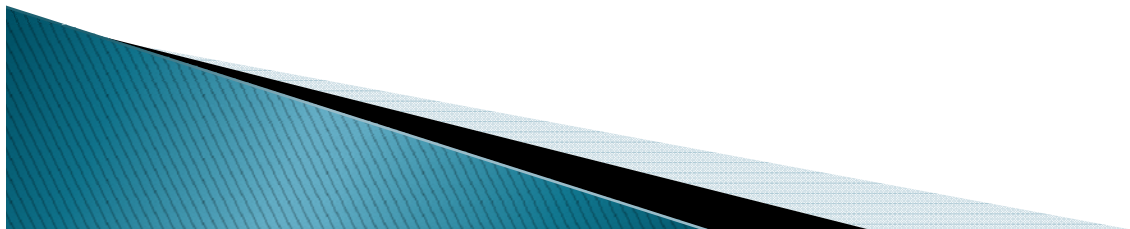
Every child in Calhoun County will have a great start. They will be safe, healthy, prepared, and eager to succeed in school and life, becoming contributing and productive members of their community.

SUPPORTING CALHOUN COUNTY'S YOUNGEST CITIZENS

For additional information call: 269.441.4001



SUPPORTING CALHOUN COUNTY'S YOUNGEST CITIZENS



The Efforts of the Great Start Collaborative Have been Enhanced by:

Widespread Community Engagement

Through

- A variety of Community Conversations
- Ask Calhoun – “Back 2 School Bash” Interviews

The Early Childhood Task Force

Advisory Committee to the Collaborative Including Representatives from:

Battle Creek Area Educators Task Force
Calhoun Intermediate School District
Kellogg Community College
Battle Creek Public Schools
Lakeview School District

United Way of Greater Battle Creek
Community Literacy Collaborative
Harwood Institute Community Core Team
Great Start Parent Coalition
Community Action of South Central Michigan
(Head Start and Early Head Start)

Many Partnering Community Organizations

School Districts within CISD

W.K. Kellogg Foundation



“How do I get involved?”

For more information on how you or your organization can
become a Partner with the Great Start Collaborative
Please contact

Nicole Hamilton

Co-Coordinator

Calhoun Great Start Collaborative

269-441-4001

HamiltonN@calhounisd.org

Sheley Bess

Co-Coordinator

Calhoun Great Start Collaborative

269-441-4001

BessS@calhounisd.org

www.calhounisd.org/departments/greatstartcollaborative

